



2000-2025

# THE NATIONAL CONCERT HALL

Best New Development category nominee



mipim  
AWARDS

**arquivo**architects  
2025





## arquivio architects

*Founded in 1999 by Phd. architect Daniel Fraile and by architect Juanjo Soria, arquivio architects is an awarded architecture firm with works in several countries. With direct branches or partnerships in Dubai, Doha, Riyadh, Cameroun, Equatorial Guinea, Ivory coast, and recently Lithuania, develops projects from large to small scale. Urban Design, Landscaping, Architecture, Interior Design, Lighting design and Grafic design.*

**arquivio** is an independent architectural company providing integrated professional services. The company develops three mayor business areas:

- 1.- Urbanism & Landscaping
- 2.- Architecture
- 3.- Interior Design

**arquivio** is specialized in architectural design. During this time we have responded to over 100 customers worldwide, and have developed more than 200 national and international competitions on five continents, gaining recognition in 40% of them.

We believe that the architectural practice is vital in the evolution, so we made the healthy task of competing nationally and internationally with offices around the world to progress and continue to innovate.

The practice was founded in Madrid in 1999, today we continue with the spirit of that time, more and more convinced of the architectural responsibility we have with our environment. Thus we establish a series of pillars on each project.

- 1 .- The built idea. Respect for the discipline of architecture, the value of the concept and synthesis, the understanding of the place. Matter and space. Light.
- 2 .- The architectural sustainability. Environmental awareness and influence. The ecological footprint, from the material to energy. The permanent or ephemeral. Maintenance 0.
- 3 .- Multidisciplinar awareness in architectural development. The incorporation of other disciplines such as art, industrial design, graphics, mass media ... the architectural process.

From these principles we develop the projects through families or ideas that help us investigate and innovate consistently.

A well designed building must function correctly from all aspects. The relevant disciplines must be co-ordinated at the design stage, so that each element of the building performs its role enhancing the overall performance of the facility. Our integrated multi-disciplinary design teams' work in unison on common projects thus removing the frequent conflicts of interest common on many building projects, all the while focusing on the fundamental importance of excellence in architecture.

Good architecture should not necessarily be expensive architecture. **arquivio** architectural practice strives to offer our Clients the best solutions within the required budgets, offering innovative ideas for reduction of the life time costs of the building.

**arquivio** team does not renounce their commitment to first class architecture when designing these residential units. With the adequate choice of construction solutions and building materials high quality architecture can be achieved within the Client's budget.

### PROJECT ORGANISATION

**arquivio** has outstanding strengths when it tackles complex, multidisciplinary projects, carrying out design, construction supervision, project management, business assessment, etc. **arquivio** has a wide range of experts with a variety of experience in each of its technical areas. When it comes to individual projects the aim of the company is to bring all the different experts under a single project umbrella. Although the company is divided into ten technical areas, work roles are organised under project based teams. The key to the success of any project is to have the right experts and to ensure the information flows efficiently between the experts, any external consultants, the Client and any other external agents.

### CONTINUOUS PROFESSIONAL DEVELOPMENT

Human capital is the main resource of **arquivio** architecture and is designed to work under an umbrella that allows us to grow quickly if necessary to have a network of permanent staff for many years. In **arquivio** we are involved in teaching at various institutions on a regular or temporary part in courses and workshops in Spain and abroad.

### SUSTAINABLE DEVELOPMENT

**The environmental impact of a building, its construction, operation and final demolition is becoming more important. Our Clients' requirements are becoming increasingly demanding with respect to sustainable development and green architecture.** **arquivio** has responded in a proactive manner.

Within the **arquivio** Architecture department there are a number of engineers and architects specifically qualified for green design. At an early stage of the project, the concept is reviewed and changes are made in order to enhance its energy efficiency and to reduce its lifetime costing and environmental impact. At a later stage of the design, studies are carried to estimate the actual energy efficiency of the building and its impact, rating the facility as appropriate for its location.

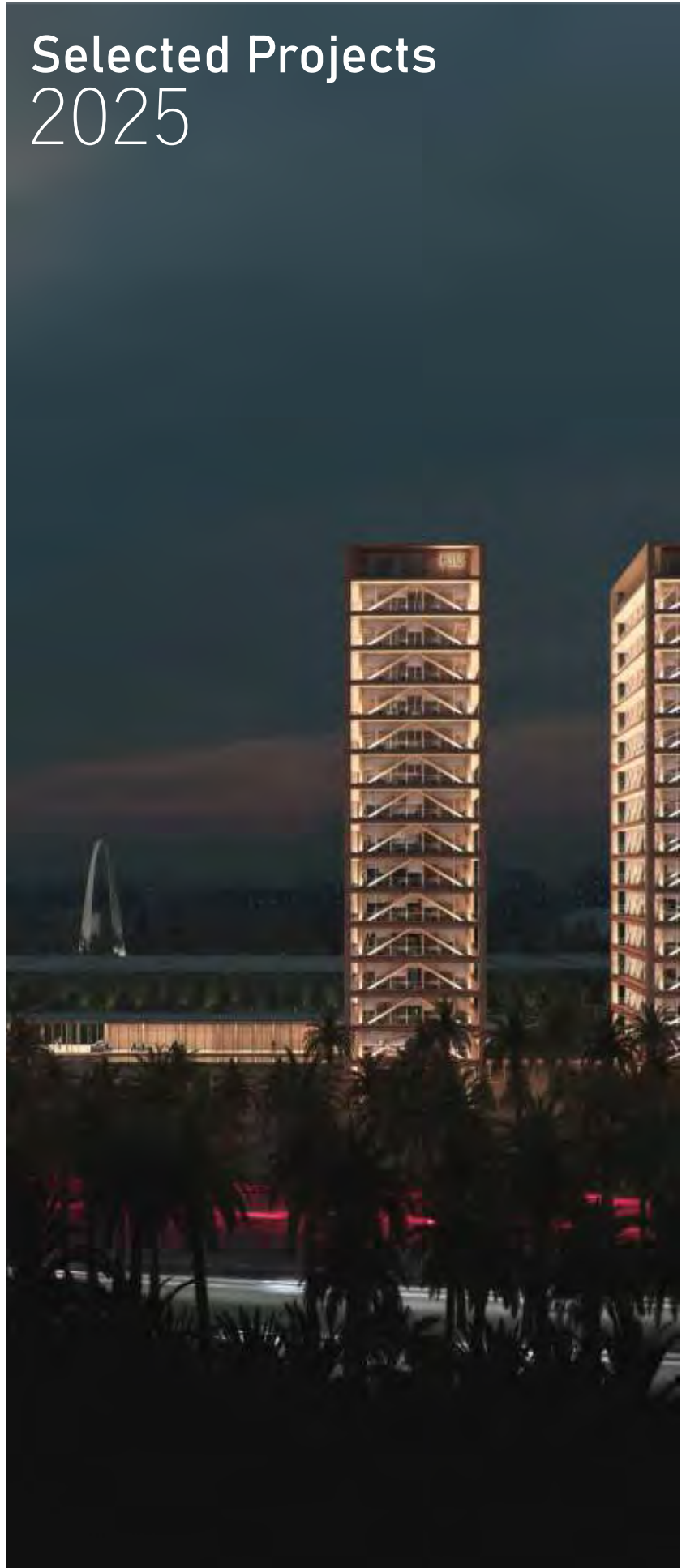
Environmental consciousness not only makes sense from a sustainable development point of view, it also significantly reduces the operational and maintenance costs of the building. **arquivio** professionals are very aware of this fact and strive to include in their designs the latest technology and the state of the art philosophy on reduction of lifetime costs.

When calculating the cost of a building, **arquivio** considers the lifecycle costing of the office. This includes all maintenance and operation costs. Therefore energy saving design are brought to the attention of the Client, especially where they might produce a saving in the lifecycle cost of the building. **arquivio** would promote the use of recyclable materials for the construction of this building in order to advance sustainable designs.

- 2nd prize Health center, Mallorca 2025  
 1st prize social center, Merida 2024  
 4th prize, Expansion of MAXXI Museum, Rome 2022  
 2nd prize elderly residences in Bunyola, Mallorca 2022  
 1st PRIZE spa and swimming center, Bignasco, Switerland 2021  
 Honorable Mention and shortlisted, War Memorial in S.Korea, 2020  
 Honorable Mention, National Library in Guanju, S.Korea, 2020  
 Honorable Mention Social Center in Avila , 2020  
 Honorable Mention Visiting Center and laboratories in Quian, Santiago de Compostela, 2020  
 3rd PRIZE Knowledge and Innovation Center in Tripoli, Lebanon, 2019  
 2nd PRIZE Science Centre Ljubljana, Slovenia, 2019  
 H.M. Bancadas Pavillion in Madrid, Spain, 2019  
 1st PRIZE Spain Square in Alcorcón, Spain, 2009  
 1st PRIZE Freedom Square in Alcorcón, Spain, 2009  
 3rd PRIZE Advanced district in Toledo, Spain 2009  
 1st PRIZE 56 public houses in Ronda, Spain, 2008  
 1st PRIZE 27 unifamiliar housing in Fuerte Vaqueros, Spain, 2008  
 1st PRIZE Sustainable housing in Madrid ECOVI foundation, Spain, 2008  
 H.M. Humanistic building. Puebla de Alfindén. Zaragoza, Spain, 2008  
 H.M. New Justice campus Contest in Madrid, Spain, 2007  
 2nd PRIZE Housing and office building in Zaragoza, Spain, 2007  
 H.M. Bioclimatic Housing. Huerca Overa, Almeria, Spain, 2007  
 H.M. Santa Rita Geriatric, Menorca, Spain, 2007  
 H.M. Canal Adaption in Sa Riera, Mallorca, Spain, 2007  
 1st PRIZE Market and Plaza in Gibraleón, Huelva, Spain, 2006  
 1st PRIZE Public Building in Móstoles, Madrid, Spain, 2006  
 4th PRIZE International competition in Lalla Yedounna in Fez 2006  
 4th PRIZE Hobart Waterfont Internacional contest, Australia, 2006  
 1st PRIZE Masterplan La Roda, Albacete, 2005  
 1st PRIZE Rural Hotel in Orca, Spain 2005  
 1st PRIZE Ferrogres international prize, 2004  
 3rd PRIZE Theater-Auditorium in Casas Ibáñez, Albacete 2004  
 1st PRIZE Ascer Interior design, 2004  
 2nd PRIZE Bioclimatic housing in Hellín, Albacete, Spain, 2003  
 2nd PRIZE Square in Inca, Mallorca, Spain  
 4th PRIZE Congress building in Alcorcón, Madrid, Spain  
 H.M. Balear Security Institute, Mallorca, Spain ,2001  
 H.M. Birds Interpretation Center in Salsburua, Vitoria, Spain, 2001  
 2nd PRIZE Housing building in Parla, Madrid, Spain, 2000  
 H.M. Memorial Monument in Milán, Italy, 2000  
 1st PRIZE Public housing in Villanueva de la Reina, Jaen, Spain, 1999  
 1st PRIZE Vivienda pública en Mármol, 1999  
 1st PRIZE Rus, Jaen, España, 1999  
 1st PRIZE Public housing in Mármol, 1999  
 1st PRIZE Rus, Jaen, Spain, 1999  
 1st PRIZE Sport Complex in Albacete, Spain, 1999  
 1st PRIZE Social Center in Albacete, Spain, 1999  
 1st PRIZE Municipal Concert hall in Chinchilla de Montearagón, Spain, 1998  
 1st PRIZE Rowing and Canoeing facilities building in Miño, A Coruña, 1998  
 1st PRIZE Economics Faculty for the University of Lleida, 1997  
 2nd PRIZE City Hall building in Vivero, Lugo, Spain, 1997

---

# Selected Projects 2025





PUB.(22)-361

# Expansion of the MAXXI Museum from Zaha Hadid, Rome, Italy

**4th prize** \*Among 108 participants

International Competition 2022





PUB.(21)-275

Spa and swimmingpool center, Bignasco, Switzerland

**1<sup>st</sup> Prize**  
International Competition 2021



PUB.(19)-275

# National Concert Hall Vilnius, Lithuania

**1<sup>st</sup> Prize** \*Among 254 participants  
International Competition 2019



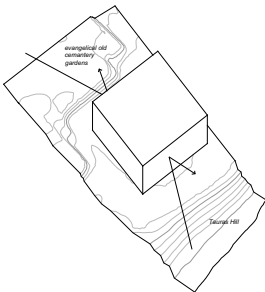
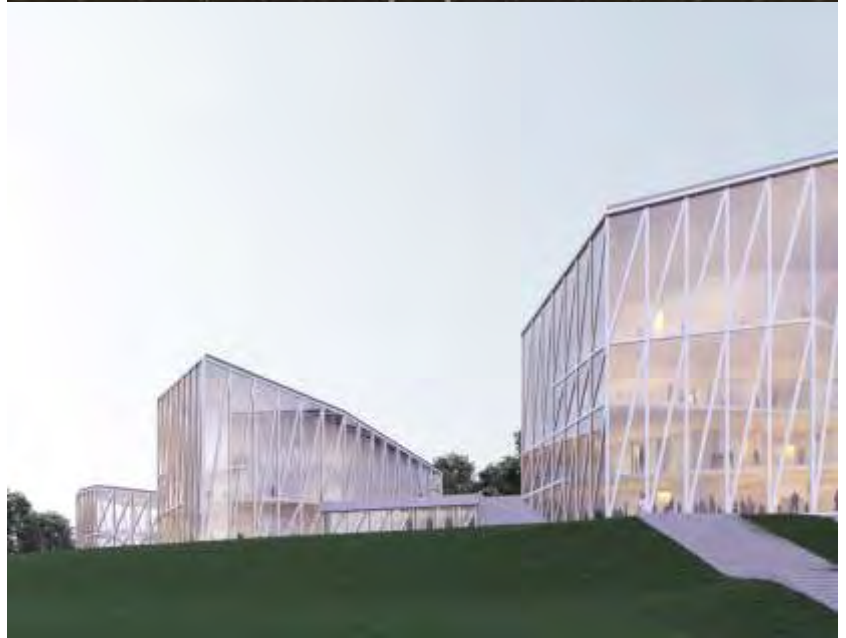
The existing building is so wide, it creates a barrier between the evangelical old cemetery gardens and Tauras Hill

## New Tauras Hill Park, a history of respect.

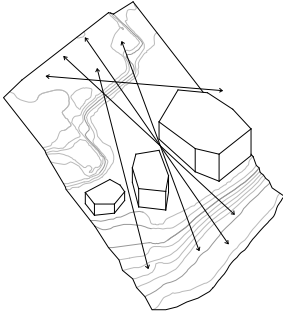
a.-The outstanding situation of the existing building allows a unique visual from the city, but at the same time implies, in a project of these dimensions, an eminently horizontal profile. At the same time the building itself is like a wall that separates the park from the Old Evangelical Cemetery gardens.

## Slimer buildings so they have better visuals

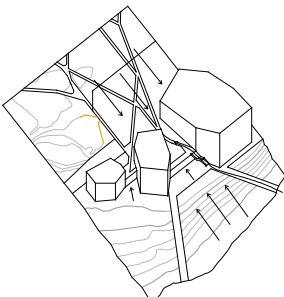
b.- To achieve a better slenderness in the architecture, and thinking in a more direct and clear connection between the park and the Old Evangelical Cemetery gardens it is decided to fragment the program into three pieces (Main Hall, Small Hall and House of the Nation) joining together by a base (plinth) that acts as a continuous foyer.



The existing building is so wide, it creates a barrier between the evangelical old cemetery gardens and Tauras Hill



Slimer buildings so they have better visuals



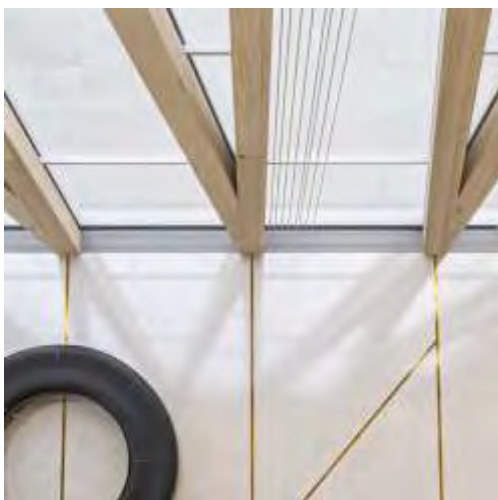
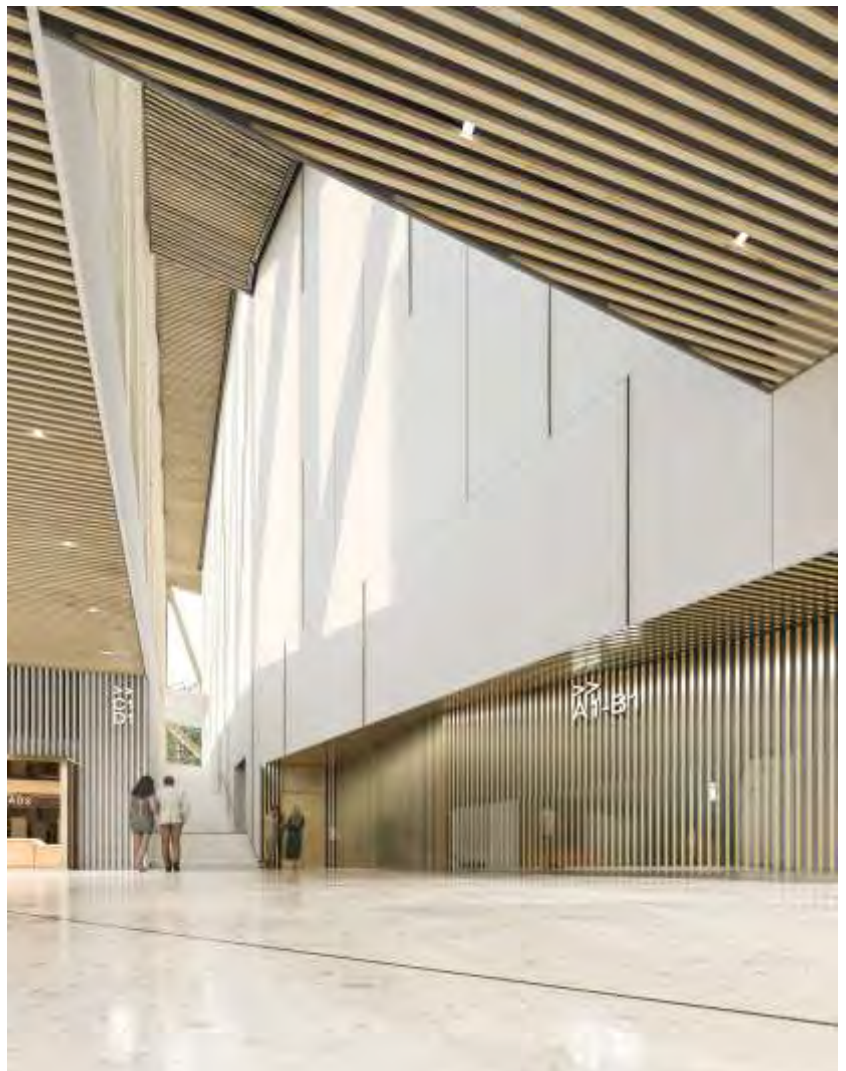
Merging both parks to create a new Nation Park and enhancing heritage and respect



PUB.(19)-275

# National Concert Hall Vilnius, Lithuania

**1<sup>st</sup> Prize** \*Among 254 participants  
International Competition 2019





PUB.(24)-396

# Social Center Mérida Spain

**1<sup>st</sup> Prize**

International Competition 2025



PUB.(25)-411

# Theater and Auditorium Vinaros, Spain

**1<sup>st</sup> Prize**

Competition 2025





PUB.(25)-410

Health Center  
Llucmaior, Mallorca  
**2nd prize**

International Competition 2025





PUB.(19)-280

## Kic Libano Tripoli, Lebanon

**3<sup>rd</sup> Prize** \*Among 130 participants  
International Competition 2019

uia>

The challenge to work around Niemeyer's masterpieces is solved through respect and admiration. A series of displaced stripes arrange the whole with clarity and simplicity. (The axonometric view easily shows the series of layers from the new building till RKIF). The remaining areas are completed with orange orchards recovering the roots, bringing us back to an inland Tripoli forged through the richness of the water in a dry land.

The early sketches of Niemeyer's work anticipated the mixing between horizontal and vertical structures. The project has just followed those initial intentions with a XXI's siecle material.

Outdoor spaces are the extension of the buildings themselves, with citrus notes underneath the shadows of the orange orchards. A low cost lawn in the heart of the project is designed to enjoy sports, and outdoor exhibitions, offering a wonderful open space to relax.



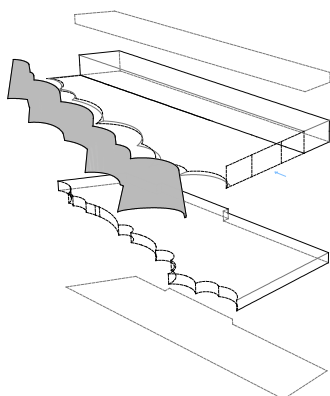
PUB.(19)-278

## Science Center Ljubljana, Slovenia

**2<sup>nd</sup> Prize** \*Among 49 participants  
International Competition 2019

LJUBLJANA represents a healthy proportion between nature and built urban environment.

On the science museumt centre an emerging green terrace overlooking the city's skyline is designed as a fifth facade of the complex that will have a commanding presence when seen from the hills that gather the heart of the city



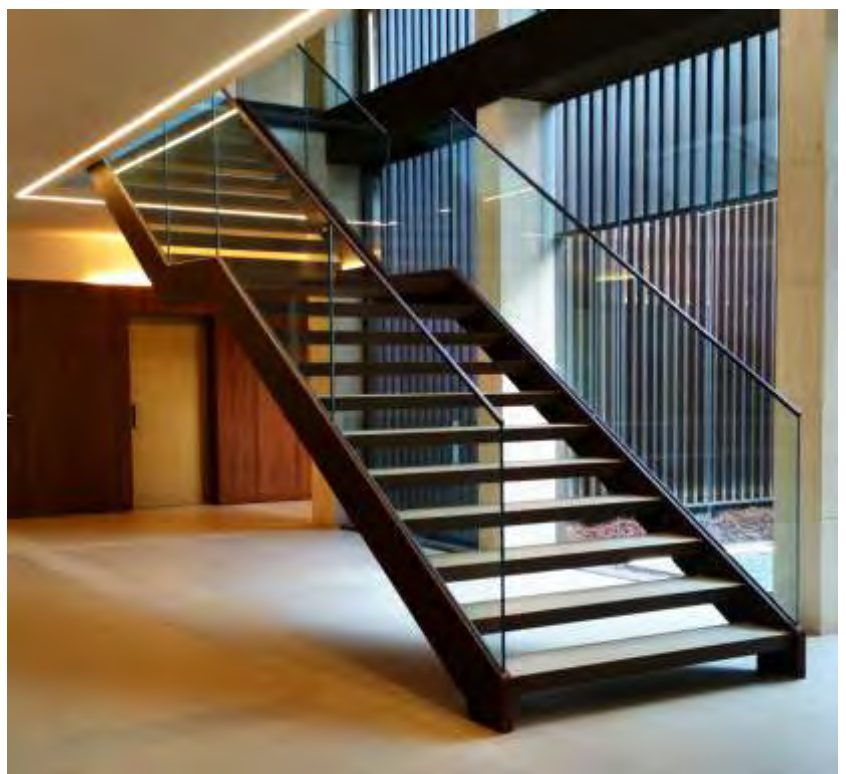
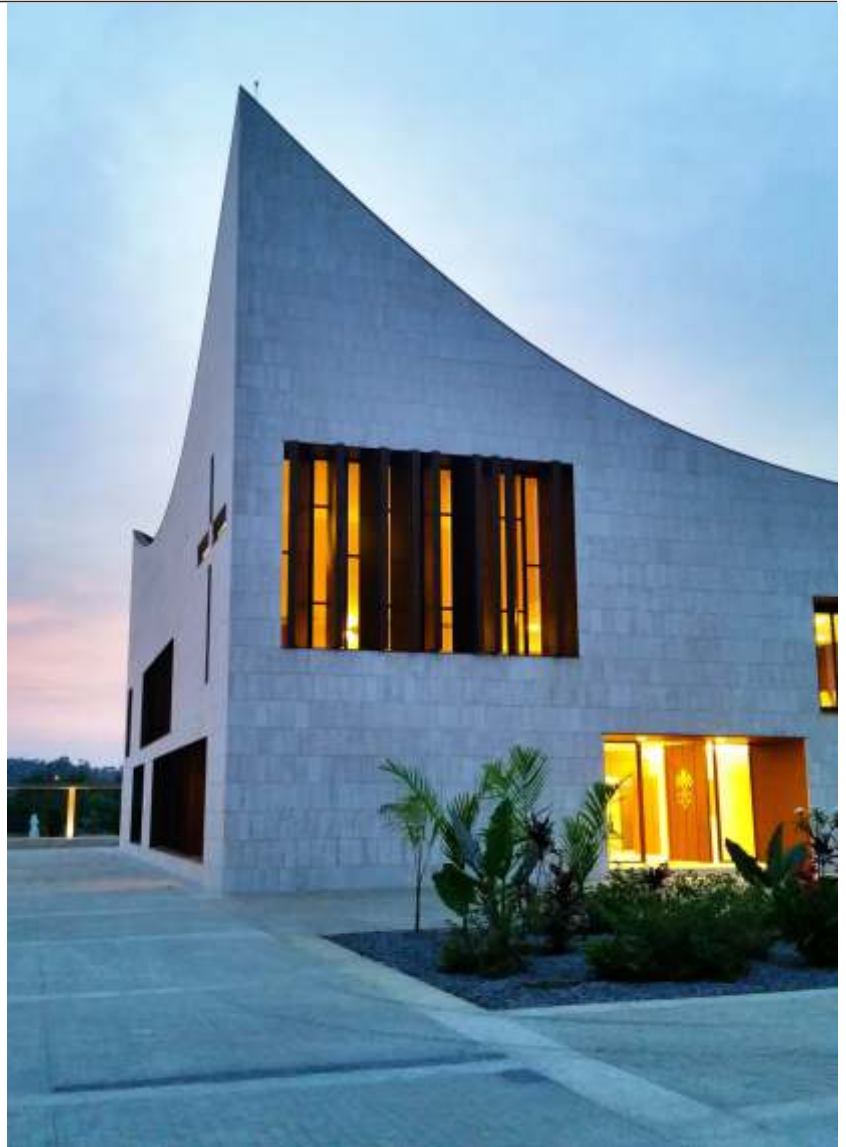
PUB.(12)-124

## Bishopric Ebibeyin, Equatorial Guinea

Located in one of the most ecclesiastic complexes in the city of Ebibeyin on the border with Cameroon, we have proposed the construction of a new episcopate as well as the rehabilitation of the rest of the complex. The main building is in the centre of the complex and has simple architecture yet is extremely emphatic.

A sandstone box with an inverted, concave, concrete dome.

All holes are lined with wooden shutters. Inside the building, a double height cloister houses the main staircase of the building. The building is surrounded by a stone enclosed space surrounded by geometric gardens.





PUB.(09)-71

## Bata International Airport Bata, Equatorial Guinea

The city of Bata aims to modernize their infrastructure in the coming years, being the capital of mainland Equatorial Guinea.

The project is structured as a simple steel membrane, curved on its side responding to internal traffic flow. This membrane is coated with zinc and pierced with holes perpendicular to the façade, allowing additional light into the interior of the building. The perimeter is surrounded with a glass façade giving the impression that the cover floats above the ground.



PUB.(15)-159

## Ministry of Education Malabo, Equatorial Guinea



PUB.(13)-150

## Judicial building Luba, Equatorial Guinea

PUB.(12)-128

## National Auditorium Malabo, Equatorial Guinea

The auditorium is quite versatile and allows music concerts, plays, sporting events, conventions and banquets, films, displays of international sporting events, etc ... in a completely professional way.

The maximum capacity of the complex varies depending on the type of show and its needs. The auditorium is adaptable in minutes for the required use.





PUB.(53)-345

Transportation Hub,  
Lugano Switzerland  
International Competition 2023



PUB.(78)-345

Geneve National Library  
International Competition 2023



PUB.(01)-21

## Theater-Auditorium Albacete, Spain

### 1<sup>st</sup> Prize

We were faithful to the contests main idea of building a simple yet functional auditorium. This was a fundamental premise to take into account due to the tight budget in hand of 600,000 €.

Therefore, the proposal put forward was to create a single volume, similar to an exterior container, which would in turn occupy the entire site adapting to the gradual slope in the terrain. Thus, the stage box is accessible from the street, allowing ease of access to materials and at the same time being able to generate different landscapes in the background.



PUB.(06)-33

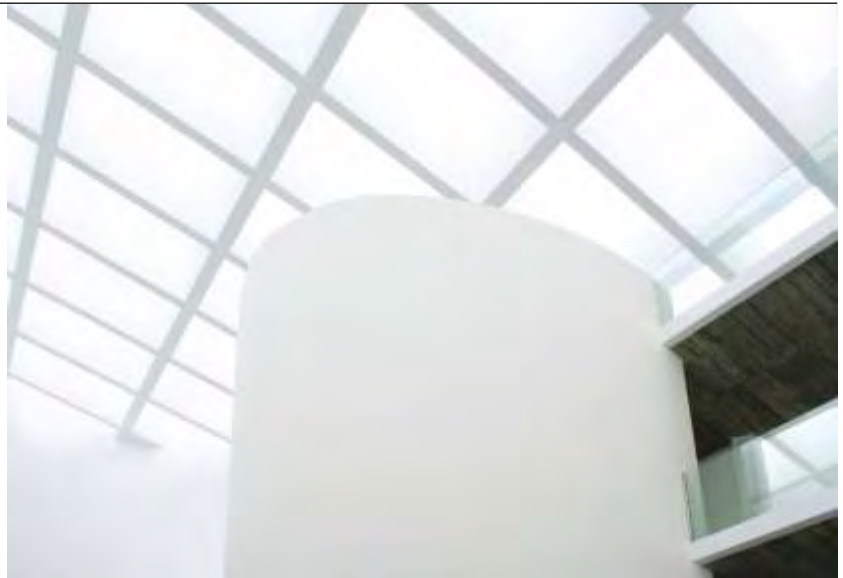
## 'Buen Suceso' Refurbishment Albacete, Spain

### 1<sup>st</sup> Prize

The aim was to create an internal space to replace the street as a place of exchange. It was decided to demolish the central bay of the building in which stairs and rooms caused a feeling of utter chaos and made it extremely difficult to reconcile with the idea of space integration.

Replacing the central bay, a large core of communications is built which gives the complex an institutional presence and allows for a healthy coexistence between the different parts of the complex.

The second part of the proposal was to create a sense of unity between the elder and younger people in the building





PUB.(18)-294

Adaptation of existing project,  
'Maria Luisa Theater'  
Mérida, Spain

**1st prize**

\*From Luis Antonio Gutiérrez Cabrero

National Competition 2017





PUB.(18)-294

## Adaptation of existing project, 'Maria Luisa Theater' Mérida, Spain

**1st prize**

\*From Luis Antonio Gutiérrez Cabrero

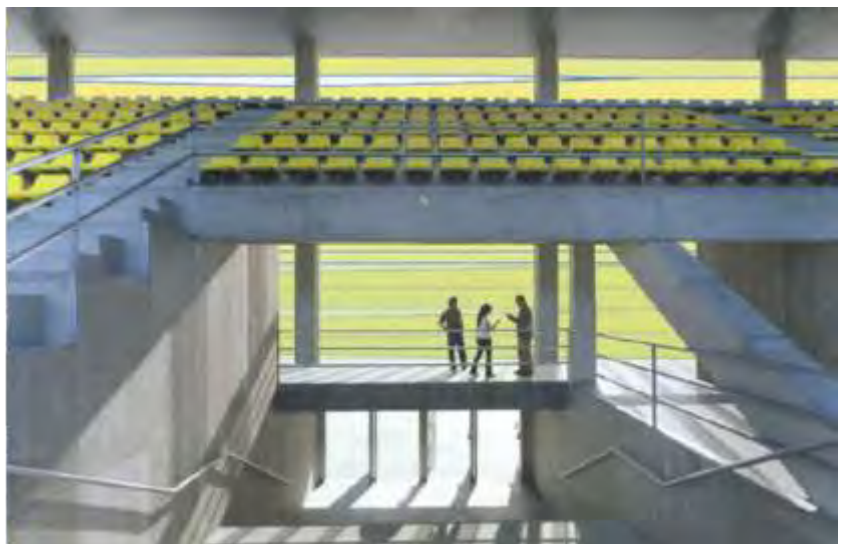
National Competition 2017



PUB.(09)-94

## Soccer Stadium Alcorcón, Madrid,

To mark the rise of the Alcorcon's Sports Association to the Spanish Silver Football League, it was decided by the municipality of Alcorcon to build a new football stadium to host the team's friendly games as well as larger events. A sports complex was to be built that is capable of seating 8000 spectators based on a design that is modern, efficient and consistent with 'Football Architecture', whilst taking into account how important this enclosure will be as a media component and as an image ambassador for that locality. We also cannot ignore the massive influence this sport has as the most important sport in public conscience and must ensure an icon in the locality.



PUB.(13)-139

## School Riaz, Switzerland

The new CO of Gruyère is possibly one of the largest buildings in Riaz, although its structure is divided into several sections, bringing it closer to the urban scale.

It is a compact and categorical architecture of very solid foundations.  
Set with traditional yet warm materials which promote the main social function of the centre.



PUB.(17)-239

## School Kouritenga, Burkina Faso

NON PROFIT PROJECT



PUB.(17)-238

## School Bougouriba, Burkina Faso

NON PROFIT PROJECT

NON PROFIT PROJECT



PUB.(17)-237

## School Passore, Burkina Faso



PUB.(45)-335

# School Soa, Yaoundé. Camerun

WITH URBANITREE

NON PROFIT PROJECT



PUB.(46)-336

# Educational Hub Neuchâtel, switzerland





PUB.(68)-364

Science Museum.  
Rome, Italy.



PUB.(17)-208

## Concert Centre M.K.Ciurlionis Kaunas, Lithuania.



PUB.(13)-148

## Ministry delegation Bata, Equatorial Guinea



PUB.(13)-133

## Malabo Tennis Club in Malabo Malabo, Equatorial Guinea

PUB.(16)-216

## School and kindergarten Riad, Saudi Arabia

PUB.(13)-139

## Visitor Center "El Pico" Malabo, Equatorial Guinea

PUB.(18)-278

Las Tablas Library.  
Madrid, Spain.



PUB.(18)-279

Villaverde Library.  
Madrid, Spain.





PUB.(19)-277

Fuenlabrada Stadium  
Fuenlabrada, Spain.



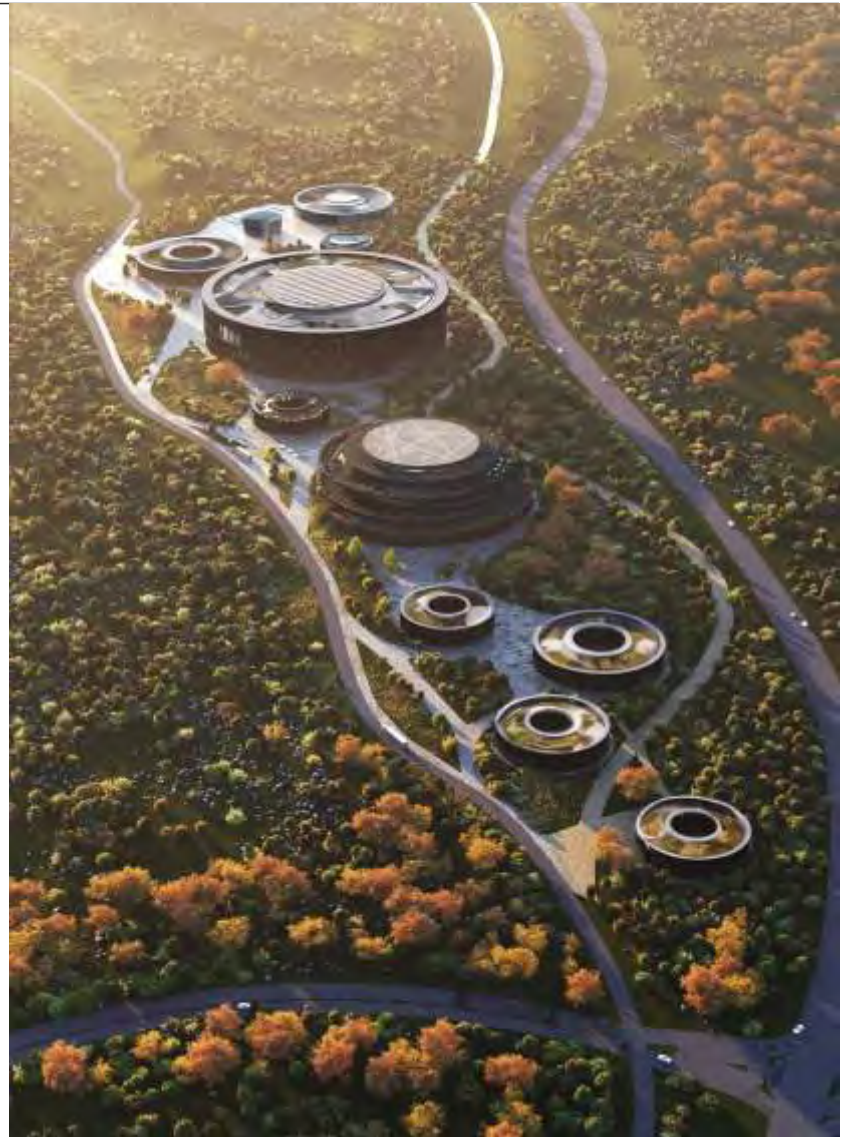
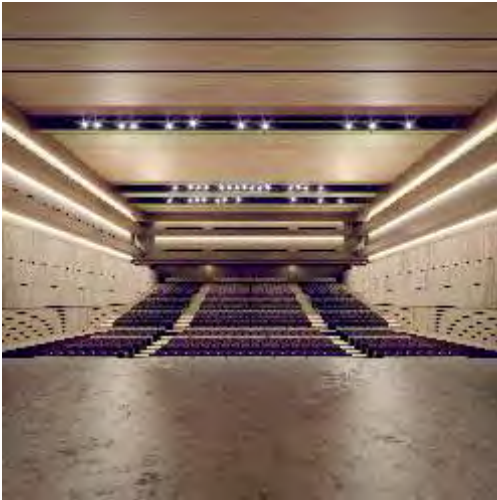
PUB.(17)-239



PUB.(23)-387

# National Congress Centre Trebinje, Bosnia

**Ranked 5th**  
International Competition 2023





PUB.(23)-392

# History of History and Future in Turku, Finland

**finalist** \*Among 401 participants  
International Competition 2023





PUB.(22)-354

Elderly residences in  
Bunyola, Mallorca.

**2nd prize**

International Competition 2022



HOT.(21)-346

Library renovation in  
Neuchatel, switzerland.

PUB.(20)-312

## City Main library Gwangju. Gwangju, S.Korea

### **Honourable Mention**

\*Among 817 participants

### International Competition 2020

The New City Main library will not only occupy the old Gwangju incinerator plot, but will also carry on its original purpose and provide the city with an extremely efficient energy supplying building. Shifting from CO energy production into a clean Solar building.



PUB.(20)-319

## Geriatric Center Ávila, Spain

### **Honourable Mention**

\*Among 38 participants

### National Competition 2020





PUB.(20)-312

## Korean War Memorial Park City of Daejeon, Korea

### Honourable Mention

\*Among 587 participants

#### International Competition 2020

The project can be defined literally as being homothetic with respect to that imperfect border, a scale translation that maintains the exact orientation of the original and materializes in the form of a fracture, a giant gash in the ground.



PUB.(21)-322

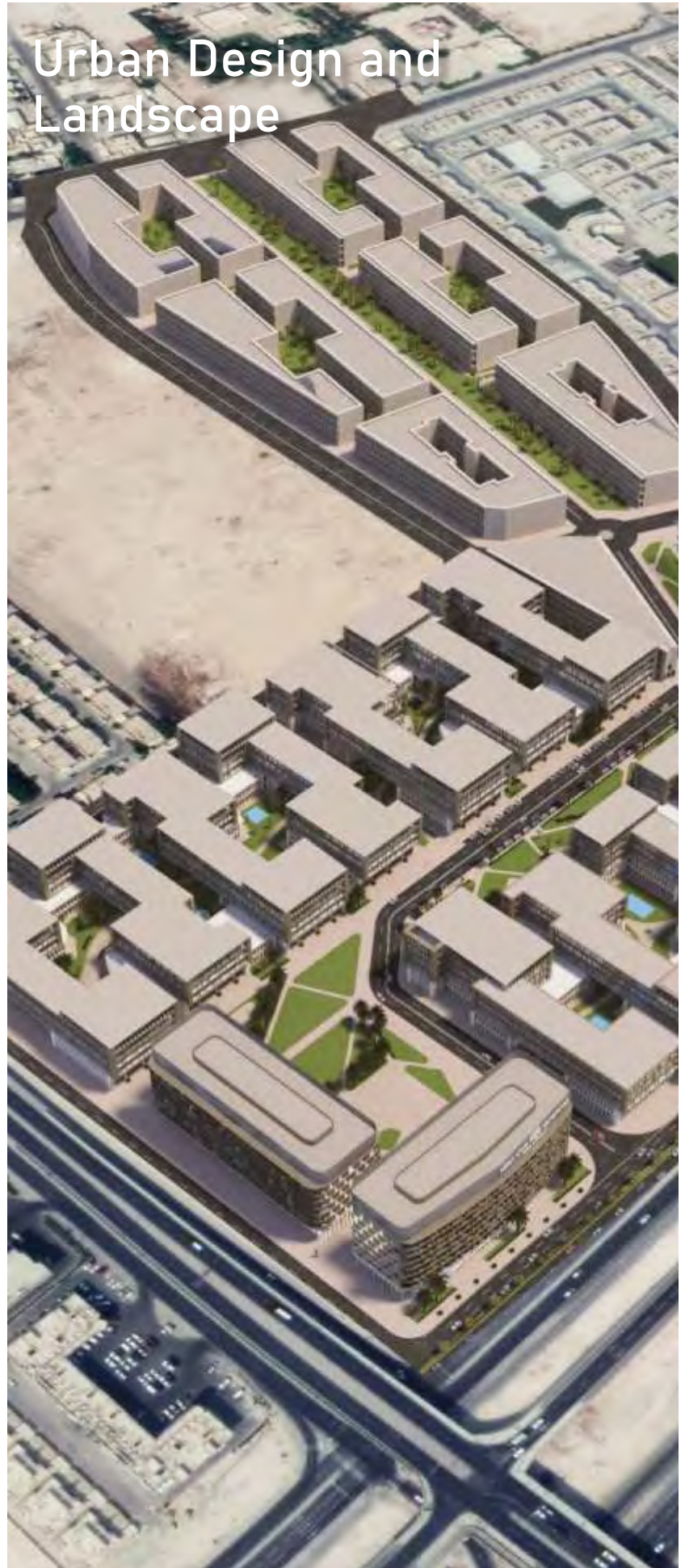
## Jamia Mosque Islamabad, Pakistan

Design of Jamia Mosque in Capital Smart City in Islamabad, Pakistan. A Mosque for 15,000 prayers that will have the collaboration of arch. Younus Khan, from Pakistan.

The building will be inspired in some details about the Unique Cordoba Mosque in Spain, and will have the possibility to be staged in several phases.



# Urban Design and Landscape





URB.(19)-290

## One Capital Masterplan 2000 housing Islamabad, Pakistan

Capital Smart City is a Real Estate development extended along M2 Islamabad - Lahore motorway. The site area is 10,300 Acres (ac) equivalent to 80,000 kanals. Given the site connectivity and proximity to New Islamabad International Airport and other urban centres, it is a catalyst for modern commercial, residential and tourism development in the Islamabad region.

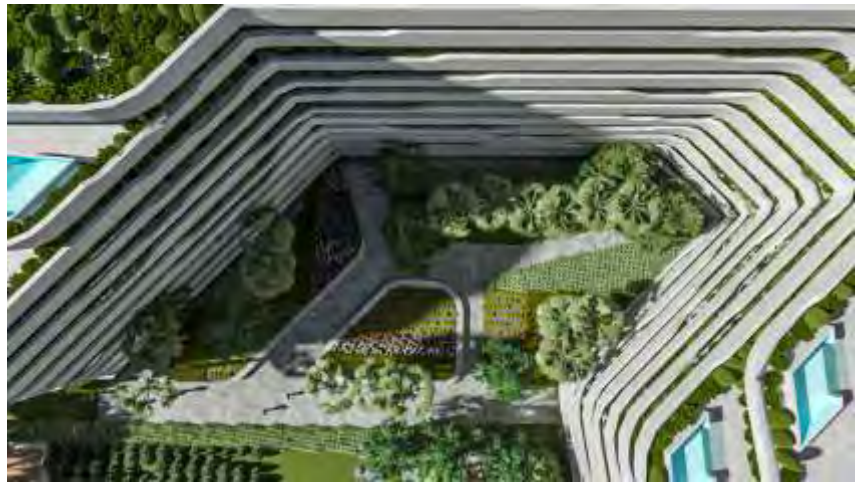
The Master Plan depicts the spatial development framework including broad land use, transportation and implementation strategy to guide future development over the next 20 years





URB.(19)-290

One Capital Masterplan  
2000 housing  
Islamabad, Pakistan



URB.(18)-215

Masterplan in Doha.  
Doha, Qatar.



URB.(09)-87

Refurbishment of Plaza de  
la libertad. Alcorcón, Madrid





URB.(11)-115

## Lalla Yedounna square. Fez, Maroc.

### Selected 2<sup>nd</sup> Phase

\*Among 190 participants

International Competition 2011

In the city of Yaounde, the capital of Cameroon, we develop a property project for the Diaspora. On land donated by the state, a plan is put together to build 300 homes, commercial buildings and office buildings.

The site is surrounded by a secure perimeter and the roads are developed using the existing topography.

The commercial area is located at the highest topographical point in a linear complex with small, seven floor buildings, whilst the residential houses are built on the slopes on individual plots.

The project is completed with amenities such as a social club, a school, a religious precinct and a linear park at the base of the commercial area.



URB.(17)-208

## Charity buildings Saudi Arabia





URB.(09)-87

## Refurbishment of Plaza de España. Alcorcón, Madrid

The remodelling project of one of the main squares in Alcorcon offers an adequate solution and easily merges with the on-going expansion of the City Hall.

Given that this is a vital space with great importance to the city, the architectural quality was sought in the materials, with a special focus on the city's landmark, the old City Hall. Other factors to consider included making sure that it was as accessible as it could possibly be, eliminating any architectural barriers, incorporating the project with the renovation of the City Hall and last but not least the importance of the economical credibility of the project.



URB.(13)-140

## Masterplan Ebede, Cameroun

In the city of Yaounde, the capital of Cameroon, we develop a property project for the Diaspora. On land donated by the state, a plan is put together to build 300 homes, commercial buildings and office buildings.

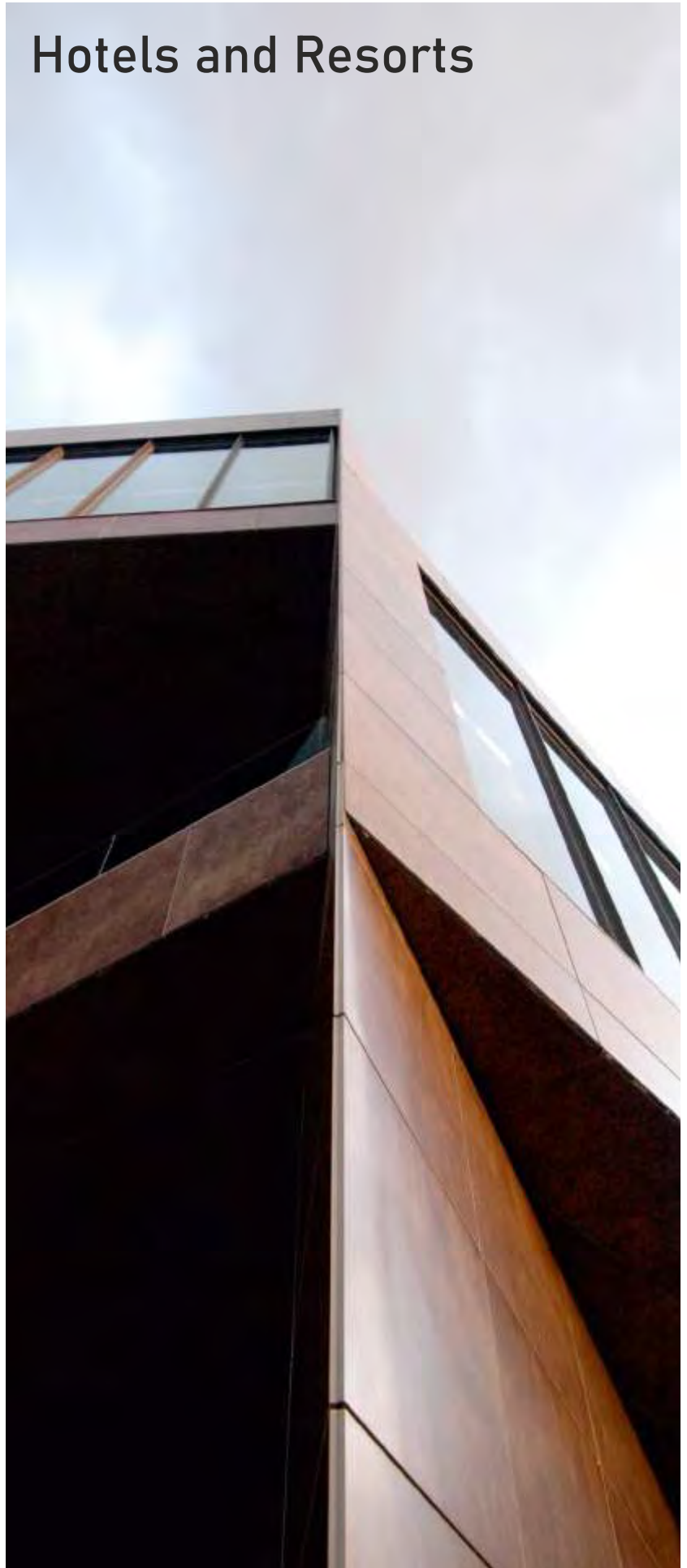
The site is surrounded by a secure perimeter and the roads are developed using the existing topography.

The commercial area is located at the highest topographical point in a linear complex with small, seven floor buildings, whilst the residential houses are built on the slopes on individual plots.

The project is completed with amenities such as a social club, a school, a religious precinct and a linear park at the base of the commercial area.



# Hotels and Resorts





HOT.(10)-107

## Panafrica Hotel. Bata, Equatorial Guinea

In one of the most privileged areas of the city of Bata lies the country's most popular old hotel known as the Panafrica. It's structured into two different bodies and has four floors with stunning sea views. The project was the rehabilitation of the entire building without losing the existing volumes. In order to do this we had to make some holes along the facade, creating a variable volume for the final surface.

Three different types of rooms were established depending on the window layouts and arrangements on the façade. Some rooms were aligned with the façade, others had a small balcony and some maintained the existing terrace.







HOT.(16)-212

## Hotel in Khobar Khobar, Saudi Arabia

Starting from a site with a high buildability, a strategy of stacking and grouping of different volumes is carried out, in a mixed building with apartments and hotels, reminiscent of balanced block constructions with large overhangs and interior voids, topped by a continuous swimming pool that is confused with the sea. This project works with the idea of scale that has been developed previously, and with the idea of iconic buildings, which are capable of attracting by themselves a client stupefied by the supply of internet.



HOT.(17)-124

## Hotel Tower Bab ezzouar Argel, Algeria



HOT.(17)-120

## Hotel Tower Oasis Argel, Algeria



HOT.(06)-41

## Rural Hotel Santos de la Humosa, Spain

In this case an old abandoned farm house was to be restored containing a wine cellar. It was in poor condition yet still retains all the original stone and brick walls. This farm house is to be transformed into a small rural hotel with a restaurant and wine cellar.

The project was divided into two phases. The first phase was a basic restoration maintaining the original stone and wooden beams and the second phase was maintaining the building contents and emphasizing the original elements by wrapping it in a sleek and modern architecture.

The hotel-restaurant project was organized through the three floors of the entire building.



HOT.(11)-122

## Sport & Hotel Complex Enguera, Spain.

An existing resort in Valencia has a project put forward for a complete transformation whilst adapting the business model to the current dynamics of the complex. After closely analysing the market we decide to make 'sport' the main theme. The quality of life and sport will be the main themes in the new hotel model. The existing complex has 73 rooms. We will add several buildings to increase the total number of rooms to 150. In addition, a spa with regenerative therapies, sport coffee shops, restaurants, multipurpose hall (capable of becoming a theatre when needed), 5 paddle courts, two tennis courts, a sports centre, various swimming pools and two football fields, one with natural grass and the other with artificial turf.





HOT.(21)-246

## “airepuro” Resort

Eco friendly Resort with industrialized cabins.  
(Arquivio & SARK architects)



HOT.(21)-246

**“Sea of Stars” Resort**

Eco friendly Resort with industrialized cabins.

(Arquivio &amp; SARK arqchitects)



HOT.(16)-235

**Praia Pomba Resort.  
Sao Tome.**



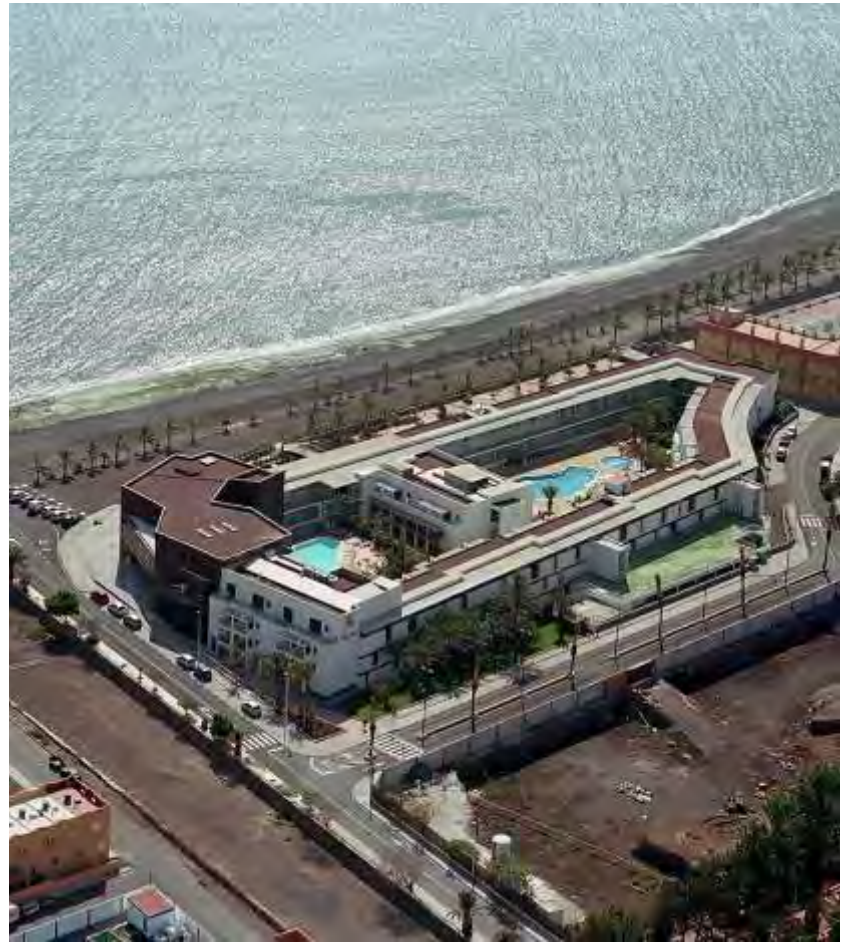
HOT.(06)-44

## Expansion Bahía Playa Fuerteventura, Spain

The Tofio Resort is a new hotel formed by the union of two different hotels constructed in different periods, the Maxorata and the Bay, as an emblem of the town of Tarajalejo. Once the first part of the rehabilitation is finished, the numbers of vicissitudes in the project are counted along with its completion.

The new Bay Beach hotel provides a turning point in traditional Canaries tourist accommodation as it is a total internal rehabilitation, completely different appearance in comparison to the original building and it has been designed in an alternative manner to the rest of the establishments already in the area.





HOT.(13)-135

**Oubangui River Hotel**  
Bangui, Central African Republic

HOT.(12)-130

**Meloneras Resort**  
Las Palmas de Gran Canaria, Spain



HOT.(11)-113

## Prefab hotel Developing Countries

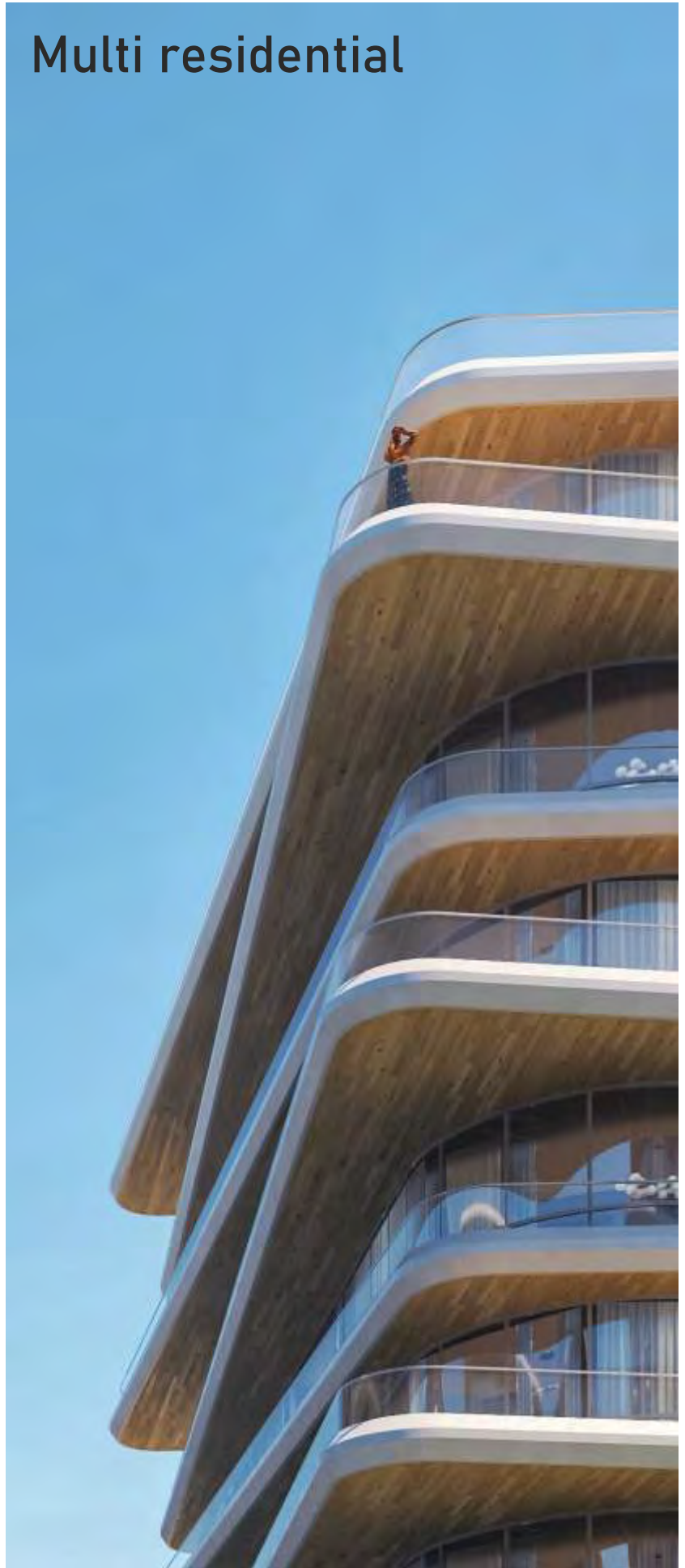
With the idea of making a housing complex both aesthetically and economically controlled, an industrialized building is designed, which can be built anywhere in the world, in a limited period of time.

The materials used are painted galvanized steel structures for the modules and blind walls finished off in stone for the communication cores.

The construction process is split into two, local construction where the completion of the foundation and general facilities (group, water tank, renewable etc ...) take place and off-site construction where the preparation of high quality industrialized housing modules will be finished. The time frame for assembly is 6-8 months inclusive of main order to completion.



# Multi residencial





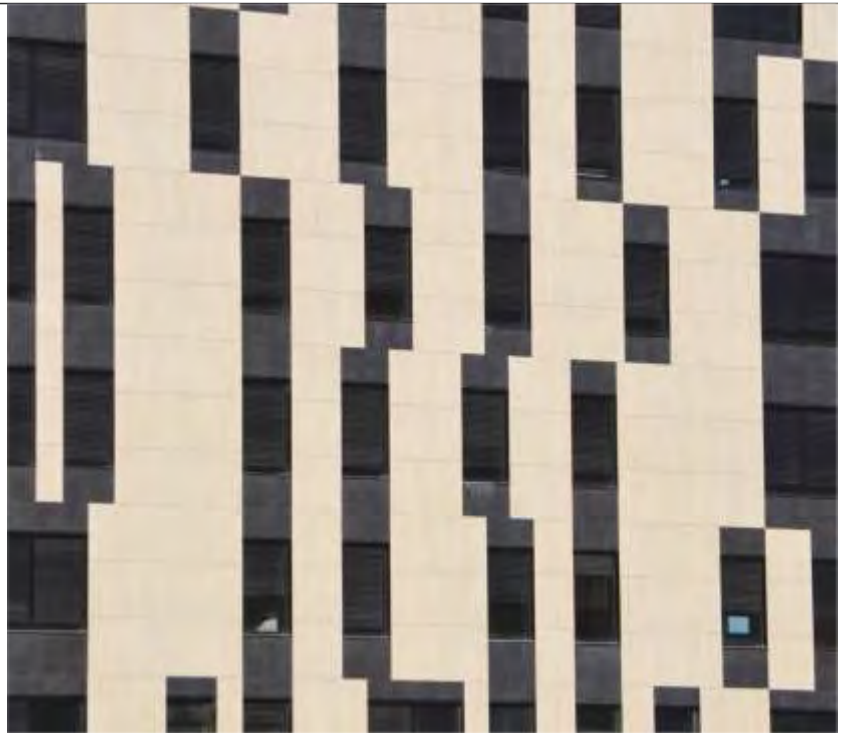
MUL.(07)-45

## Jazmin Housing Madrid, Spain

This is a 12-storey high residential tower, located in an area adjacent to a high-traffic road and close to some relocation housing. The plan proposed opted for housing typologies of 1-3 bedrooms from the first to the twelfth floor in a symmetrical disposition. Three underground floors were allocated for parking purposes, a heated pool and sauna area.

The main entrance area on the ground floor has a garden area, a few courts and a playground.

Geometrically speaking a homogenous structure was built up to the eighth floor thus making it possible to later setback the façade and create terraces.



MUL.(16)-216

## La Colomera Housing Castellón, Spain

MUL.(16)-216

## 40 Apartment houses Doha, Qatar



MUL.(19)-273

345 Lofts Housing  
San Sebastián de los  
Reyes , Spain







MUL.(18)-312

72 Garden Villas  
in Benicasim.





MUL.(18)-312

**72 Garden Villas  
in Benicasim.**



MUL.(11)-120

**14 Apartment Houses  
Douala , Cameroon**



MUL.(16)-216

**40 Apartment houses  
Doha, Qatar**



MUL.(11)-122

## 58 Single-family Housing Alcorcón , Spain



MUL.(10)-105

## 130 Apartment houses Madrid, Spain

The building's design consists of four-storey unit replicates grouped into two sections of 8 and 5 units, completed with a basement, parking area and a garden with a swimming pool and a paddle court.

To get this type of housing an access point is designed for each unit and the bedrooms are oriented towards the interior of the unit while the rest of the more common rooms are set towards the front of the property. This solution allows over 7 metre surface area balconies to be designed with a 2.5 meters cantilever.





MUL.(22)-313

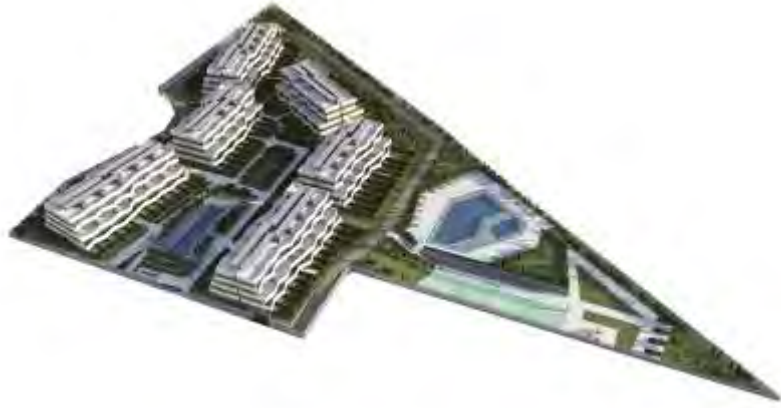
402 Lofts  
San Sebastián de los  
Reyes , Spain

Restricted Competition 2022



MUL.(22)-316

234 Lofts  
San Sebastián de los  
Reyes , Spain





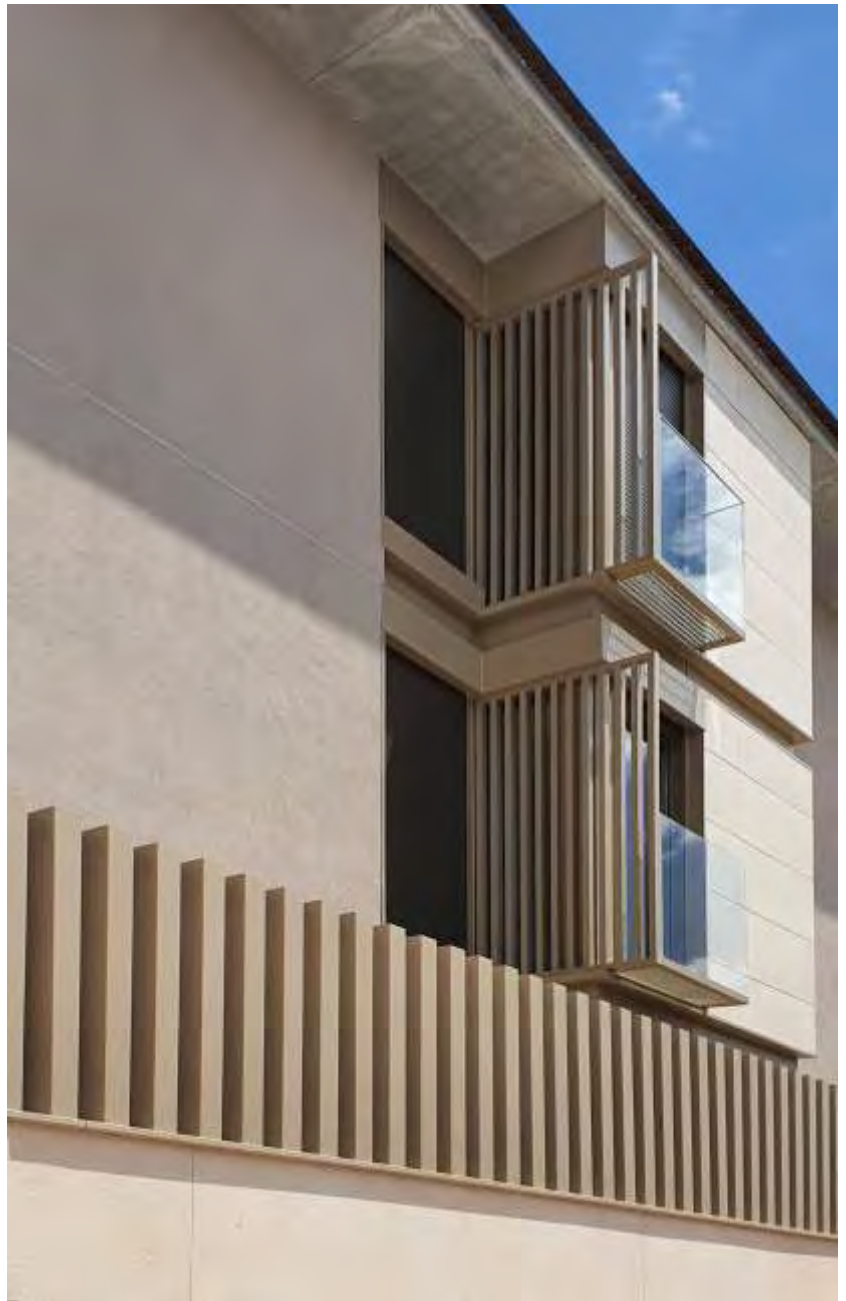


MUL

Multi residencial

MUL.(16)-238

Collado Villalba Housing  
Madrid, Spain





MUL.(21)-321

## 216 dwellings with sea views Valencian Community, Spain

(Arquivio &amp; SARK architects)



MUL.(08)-68

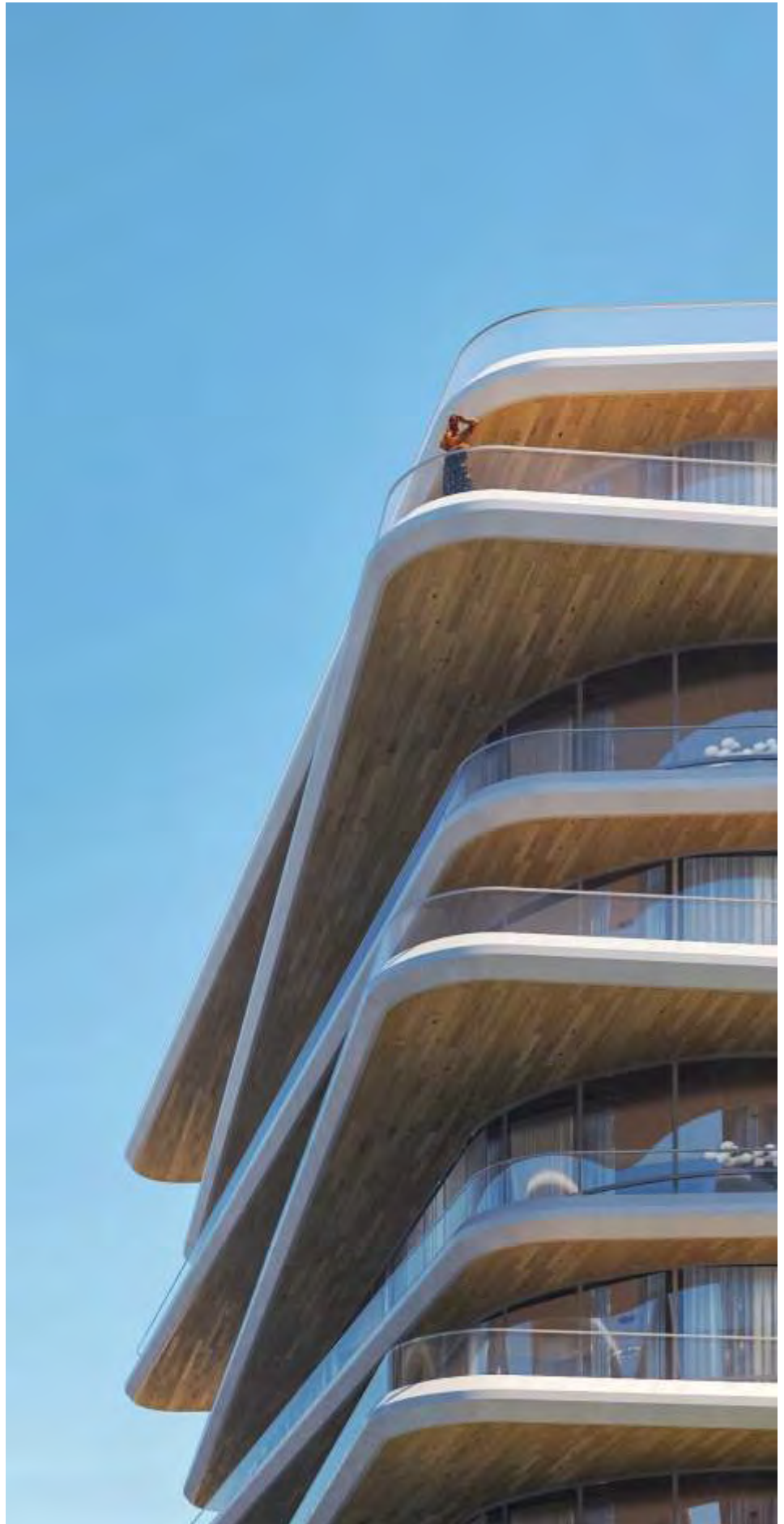
## Housing building Móstoles, Madrid

The urbanization is divided into different zones. The various different areas offer a range of features that encourage different activities and uses yet they don't break the overall aesthetics of the neighbourhood. Among the features raised by the proposed plan is the outside garden area, which can be linked to the ground floor apartments and the interior areas in which recreational areas have been established and are of common use. The central garden has a meticulous geometric design, dividing the garden into different isolated areas separated by hedges making it extremely versatile.



MUL.(22)-318

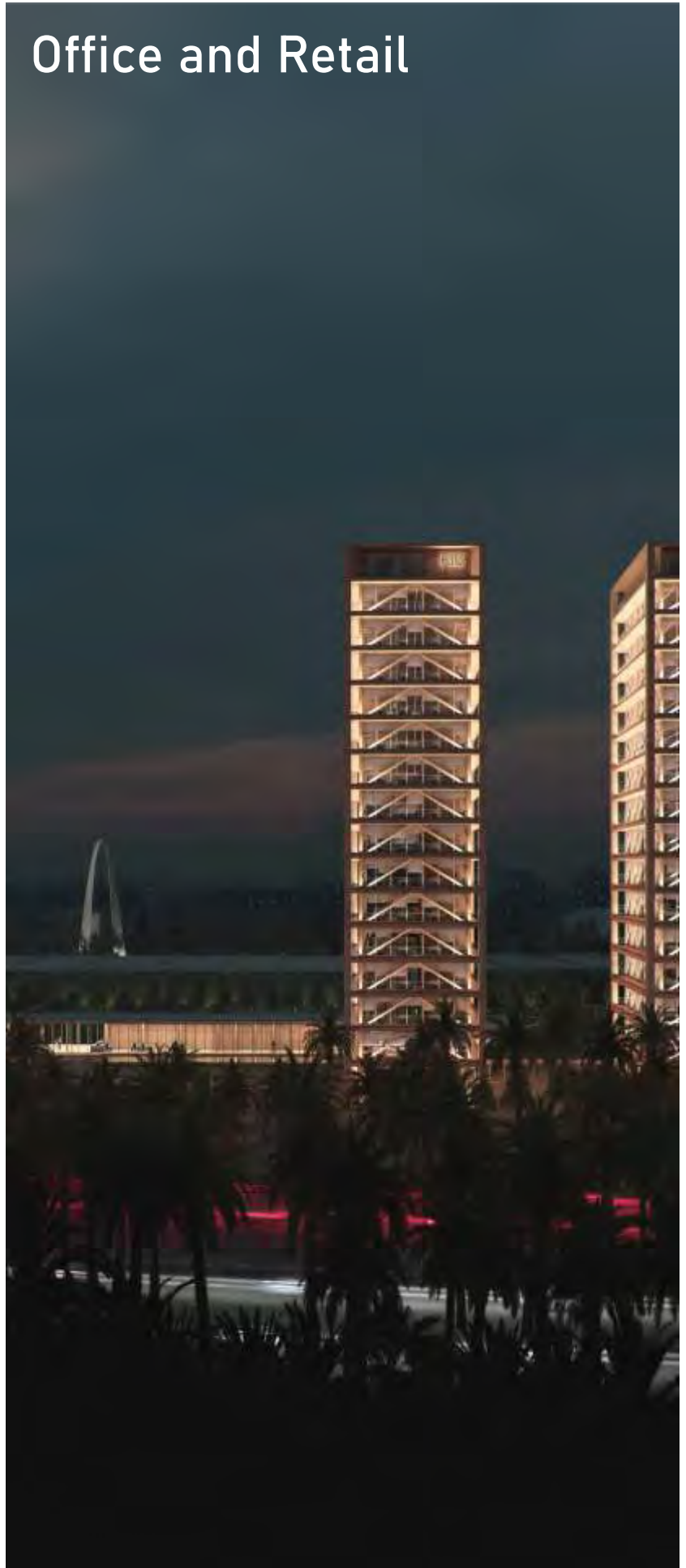
640 Apartments  
and  
Commercial Center  
Lahore Smart City,  
Pakistan







# Office and Retail





OFI.(09)-63

## Coins Tower Doha, Qatar

In line with previous work, the project of the office building of Doha is carried out.

It is a 30 storey building with a circular perimeter and an off centered axis which explores the idea of stacking and unstable balance.

All floors are divided into an opaque area coated with aluminum brass plated rods and a fully glassed area, which gives the building a very distinctive iconic force.

The inner patios are circular, while the frames and supporting walls are orthogonal, which are then interrupted on the facade.



OFI.(12)-132

## Office Building Doha, Qatar

In the heart of the financial centre of Doha, Qatar, a twenty storey office and hotel tower is planning to be constructed.

The actual structure is very simple since it consists of parallel frames hosting a series of aluminium and glass prisms which move together to create balconies that give certain dynamic aspect to the whole overall structure. The building will serve as both a hotel and as an office tower hence there will be an entrance at the front as well as at the rear of the building.

Furthermore it will also have a rooftop swimming pool as well as a panoramic restaurant on the penultimate floor. The building will be completed with reinforced concrete and later covered in aluminium composites.

The complex will also provide ample parking space with 3 floors of parking.



OFI.(15)-162

Office building  
Yaounde, Cameroun



OFI.(16)-199

Gym & Comercial Strip  
Riyadh, Saudi Arabia







Single Housing

SIN.(14)-162

## Acok House Acok, Guinea Ecuatorial

Industrialized Housing in galvanized steel and composed of several volumes twinned with various finishes. The property is sold complete with furniture included.

The structure is very versatile, allowing different distributions depending on the client needs, while the exterior facades can also be customized individually for differentiation between owners. The roof is inverted with high absorption for equatorial climates. The overall design has been developed following sustainability criteria and easy maintenance.



SIN.(13)-153

## The Frame House Barajas, Madrid, Spain



SIN.(03)-22

## Zig Zag Villa Alicante, Spain

### 1<sup>st</sup> Prize

The project presented is for a house set in an urbanization in the province of Alicante. The project is set on two floors in order to free terrain area and control maintenance costs. The house changes from East to West. While on the eastern side of the house a continuous bay window facing onto the garden incorporates the surrounding vegetation, the west facade is completely enclosed with a large plastered wall and bathed by the sunset light.





SIN.(19)-267

## Beach House Doha, Qatar



SIN.(16)-209

## Doha villa Doha, Qatar



SIN.(17)-215

## Khalifa House Lusail, Qatar



SIN.(21)-294

House in Ghana  
Ghana



SIN.(19)-266

Doha house  
Doha, Qatar





SIN.(16)-199

## Dubai house at the Palm Dubai, Arab Emirates

This project develops the concept of 'frame', or architectonic marc, using a framing element on the maximum volume allowed by the regulation, in a strictly delimited area such as 'The palm Jumeriah'. This frame is covered with a lattice of lacquered aluminum in gold that is the result of the parametric development of zones of shadow in the upper plant.

The overall volume of the house is made by solid sandstones of light tones to favor ventilation and light reflection, and supports on a ventilated black ceramic base.



SIN.(09)-98

## Melissa Housing Bata, Equatorial Guinea

SIN.(13)-141

## Prefab Housing (300m2) Ebede, Camerún

Industrialized Housing in galvanized steel and composed of several volumes twinned with various finishes.

The property is sold complete with furniture included.

The structure is very versatile, allowing different distributions depending on the client needs, while the exterior facades can also be customized individually for differentiation between owners.



SIN.(09)-81

## Paquita villa Bata, Equatorial Guinea



SIN.(09)-81

## Two Faces House Somosaguas, Spain

The project aims to reform an old 70s family home.

Following the original geometry of inclined planes, we added new elements oriented north, in this way facilitating the entry of light. The home is coated in white goat stone and galvanized steel in order to change the original appearance.

To maximize the light coming through the large windows, we installed low emissivity glass and finished it off with stainless steel carpentry, to minimize the edge profile.

The distribution of the main floor generates a new public entry area as well as a private area, along with two new spaces below deck spaces, to accommodate a private lounge and an office overlooking Madrid.





SIN.(07)-57

## Circular House Madrid, Spain

The house is built in consistent circular volumes, while the interior is taken over by orthogonal geometry providing ample living space.

The house is divided into four areas, three above ground with different annexed areas: house, office and swimming pool, and an area below ground, which occupies almost all of the main volume, dedicated to service areas and a garage..



SIN.(07)-58

## Black Box Murcia, Spain

In a miserably ruined environment such as La Manga del Mar Menor, lies an orthogonal plot which despite the location, the client requests planning for a holiday home.

The task at hand was made difficult due to the very low quality and visually dismal aesthetics of four apartment towers blocking all the southern light which had to be avoided and blocked from their view by all means. Due to the circumstances we opted for pure volumetric lines, very abstract in order not to acquire any reference from its surroundings. The house was divided into two levels, the ground floor completed with large windows (for common areas) and a blind upper floor (for bedrooms)



SIN.(05)-32

## Carbonero House Murcia, Spain

SIN.(19)-271

**Oleiros House**  
La Coruña, Spain



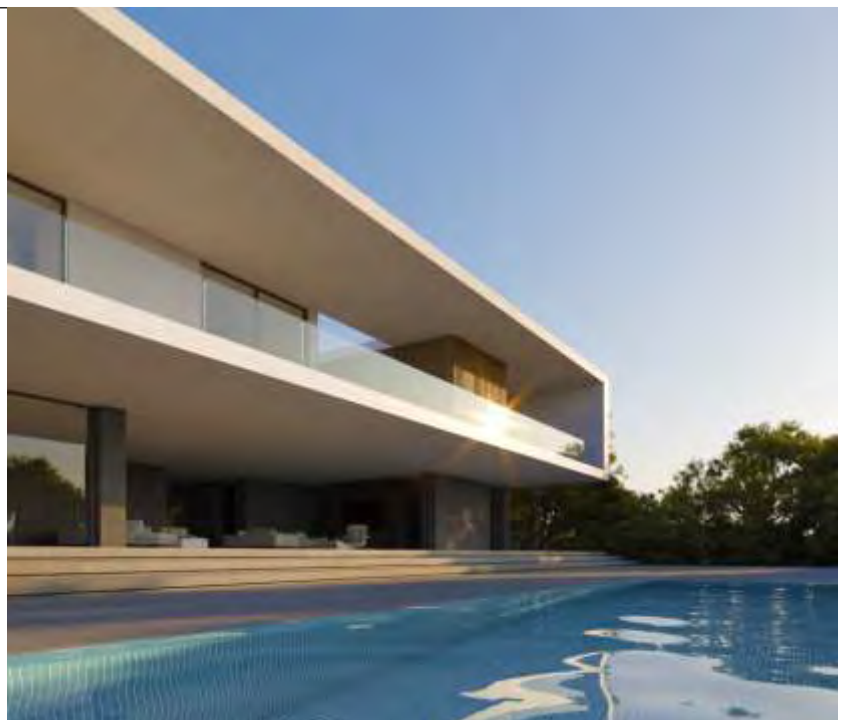
SIN.(04)-29

**Remon House**  
Madrid, Spain



SIN.(26)-318

**3 Private Villas**  
in Ciudadcampo,  
Madrid





SIN.(17)-203

Senat Villa  
Yaounde, Cameroun



SIN.(18)-255

Single-family Housing  
Madrid, Spain



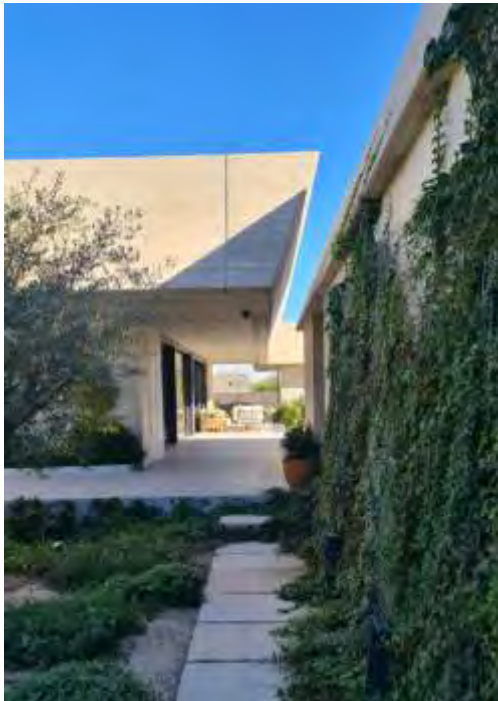
SIN.(18)-160

Prefabricated house  
in LaMadrid, Spain.



SIN.(18)-241

Mondrian House  
Murcia, Spain





SIN.(26)-318

Private Villa in Jumeirah Bay, Dubai. UAE



SIN.(18)-160

**Khalid Al Hammadi Villa  
Qatar**



SIN.(18)-170

**Ciudalcampo Villa  
Madrid, Spain**



SIN.(18)-160

**MagidVilla  
Qatar**





SIN.(18)-160

Ciudalcampo Villa  
Madrid, Spain



SIN.(24)-401

Villa Khobar  
Saudi Arabia



SIN.(19)-200

Golden Mesh  
United Arab Emirates





SIN.(18)-160

Prefabricated house  
in Oleiros, Spain.



SIN.(18)-254

# Lego House Valencia, Spain





# Interior Design



INT.(65)-338

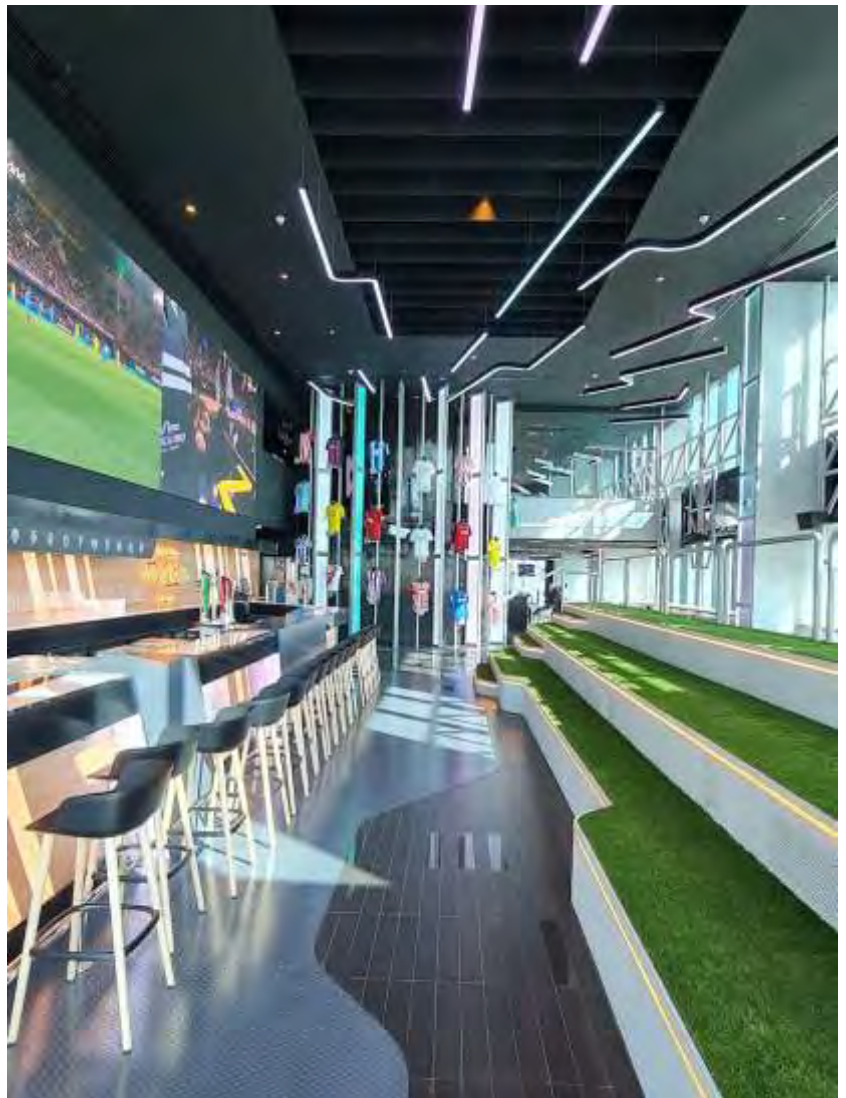
# LaLiga 29's Riyadh





INT.(65)-338

# LaLiga 29's Doha



INT.(19)-291

## One Capital Aparments Islamabad, Pakistan

A series of typologies have been developed that optimize the surfaces to the maximum and minimize the general services for a lower maintenance.

Similarly, "smart" corridors are used that allow the maintenance of the largest possible number of housing facilities from outside.

The rooms have always continuity on the outdoor balconies overlooking the central park and the mountains.

An outdoor space for Ac machines has been incorporated to avoid bad visual impacts in the complex.



INT.(18)-295

## Torres blancas housing Madrid, Spain

Se trata de una reforma integral de una vivienda en un edificio emblemático de Madrid como "Torres Blancas". Con el paso de los años la vivienda había sufrido distintas reformas que habían fragmentado los espacios por distintas necesidades de uso y acabado con gran parte de la distribución original.

Frente a esto y los requerimientos de la propiedad, se realiza una actuación que busca crear un espacio continuo y fluido, recuperando en parte los elementos originales. Para conseguir esto y dar a las formas curvas del edificio el máximo protagonismo, toda la distribución parte de estas, utilizándolas como trazas generadoras de suelo y techo. Igualmente, para no interferir en el espacio y sus volúmenes, se decidió utilizar una paleta reducida y de materiales neutros: solados de microcemento gris, madera de roble natural y el color blanco con distintas texturas. De este modo se consigue una vivienda que se recorre a través de las distintas estancias abiertas y en continuidad, organizada alrededor de un jardín central, presente en todas ellas.



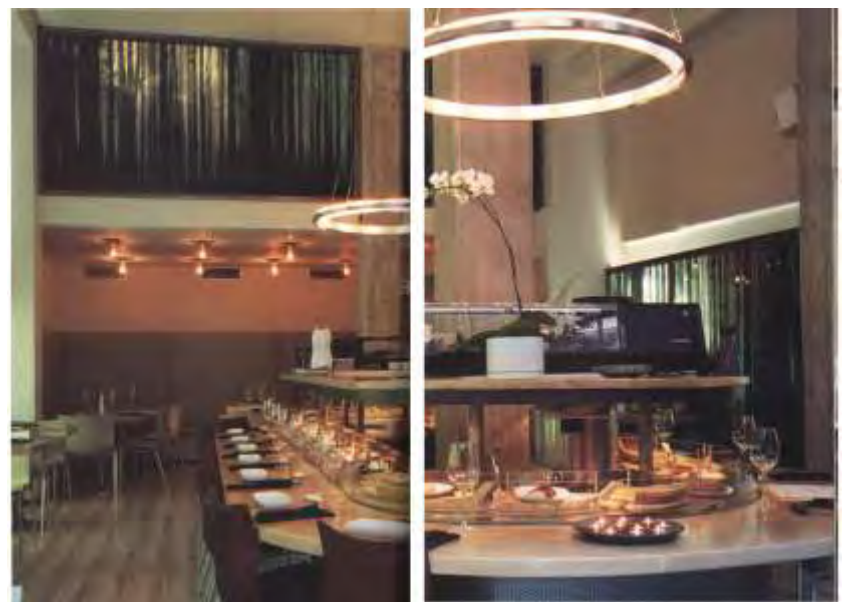


INT.(03)-27

## Japanese restaurant Madrid, Spain

In the business nucleus of Madrid a small forest with Oriental allusions opens out Madrid and is born to impregnate tranquillity to urban stress. This is a restaurant completely wrapped in a fantasy of backlit panels, with the aim of offering an ample and serene space that bends Japanese and Mediterranean cultures.

The project arose from the idea of creating a restaurant in which Japanese and Mediterranean cuisine would be together. That is how Summa was born, located in the Madrid neighbourhood of Chamaín and very close to the Santiago Bernabeu football stadium.



INT.(09)-82

## Single-family Housing refurbishment Valencia, Spain



INT.(09)-79

## Leizaran Spain

INT.(09)-69

**Kitchen Stories,  
restaurant & retail  
Madrid, Spain**



INT.(05)-31

**Maison Blanch Restaurant  
Madrid, Spain**



INT.(09)-79

**Khalid Villa  
Doha, Qatar**

HOT.(06)-41

**Rural Hotel  
Santos de la Humosa, Spain**



INT.(16)-198

## Dubai house at the Palm Dubai, Arab Emirates

This project develops the concept of 'frame', or architectonic marc, using a framing element on the maximum volume allowed by the regulation, in a strictly delimited area such as 'The palm Jumeriah'. This frame is covered with a lattice of lacquered aluminum in gold that is the result of the parametric development of zones of shadow in the upper plant.

The overall volume of the house is made by solid sandstones of light tones to favor ventilation and light reflection, and supports on a ventilated black ceramic base.



INT.(17)-215

## Khalifa House Lusail, Qatar



INT.(11)-117

## Single-family Housing refurbishment Marid, Spain

INT.(16)-214

## Senat restaurant Yaoundé, Cameroun

INT.(09)-79

## Fann - flagship store Madrid, Spain

SIN.(19)-266

## Doha house Doha, Qatar



INT.(17)-215

Khalifa House  
Lusail, Qatar



INT.(18)-265

**Hitain Villa**  
Riyahd, Saudi Arabia



INT.(19)-270

**Restaurante Sagunto**  
Valencia, Spain.





INT.(18)-265

## Lecture in Harvard

NEW MODES, MODELS AND GEOGRAPHIES OF PRACTICE

ARCHITECTURAL PRACTICE IN AFRICAN CONTEXTS  
**FROM VIRTUAL TO REAL**

**DANIEL FRAILE**  
**ARQUIVIO INTERNACIONAL**

MONDAY, APRIL 13TH, 2015 - 6.30PM - ROOM 124  
 HARVARD UNIVERSITY GRADUATE SCHOOL OF DESIGN

This lecture explores the dynamics of contemporary practice in African contexts. Derived by the consequences of the 2008 financial crisis, Arquivo Arquitectura, along with many other Spanish architecture practices, turned its focus and geography of practice toward Africa. Today, seven years after, Daniel Fraile will report on the opportunities and challenges of architectural practice there through a series of projects covering its entire process, "from virtual to real".



Organized by:

špain • GSD URBAN METABOLISM  
 STUDENT GROUP



Sponsored by:

Graduate School of Design  
 Harvard University





**Juan José Soria**  
Founding partner, Architect & Yachtmaster



**Daniel Fraite**  
Founding partner Ph. D. Architect, Doctor of Design & Professor fellow



**Jeronimo Espada**  
General Manager & Principal architect



**Anaís García**  
BIM Architect & Urban planner



**David Moreno**  
BIM Architect & Parametric designer



**Eduardo Lizarazo**  
CG architect & Product Designer



**Ricardo J Catalina**  
3D creator and I+D+I



**Mohamed Adnan Hashmi Haneesh**  
BIM Senior Architect





**Cristina Cabrera**  
BIM Architect



**Daniel Runo**  
Architect & Delegate east area



**Marcelo Delgado**  
Architect



**Blanca García**  
Community Manager



**Cecilia Gómez**  
Architect



**Luis Parga**  
Senior Architect and BIM Manager



**Milda Dudonyte**  
Architect and BIM specialist



**Gonzalo López**  
Architect



**Lidia Alttilo**  
Architect



**Gustavo López**  
Senior Architect & General Manager Central Africa



**Alejandro Bocanegra**  
Interior designer



**Raoul Ondo**  
Civil Engineer

**arquivio**architects

Daniel Fraile + Juanjo Soria

Calle Antonia Ruiz Soro, 33, 28028 Madrid

+34 915 74 12 68

[info@arquivio.com](mailto:info@arquivio.com)

